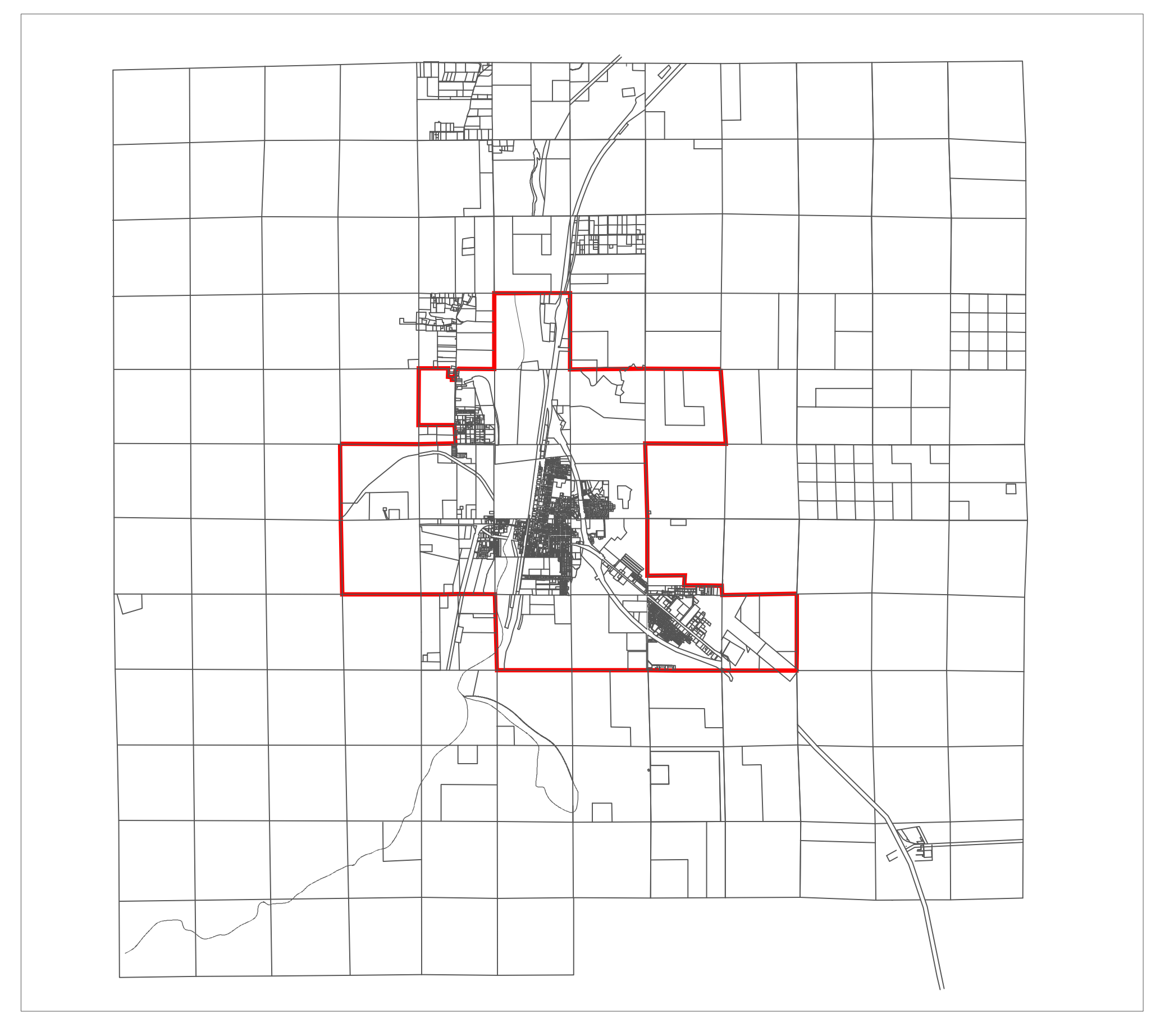
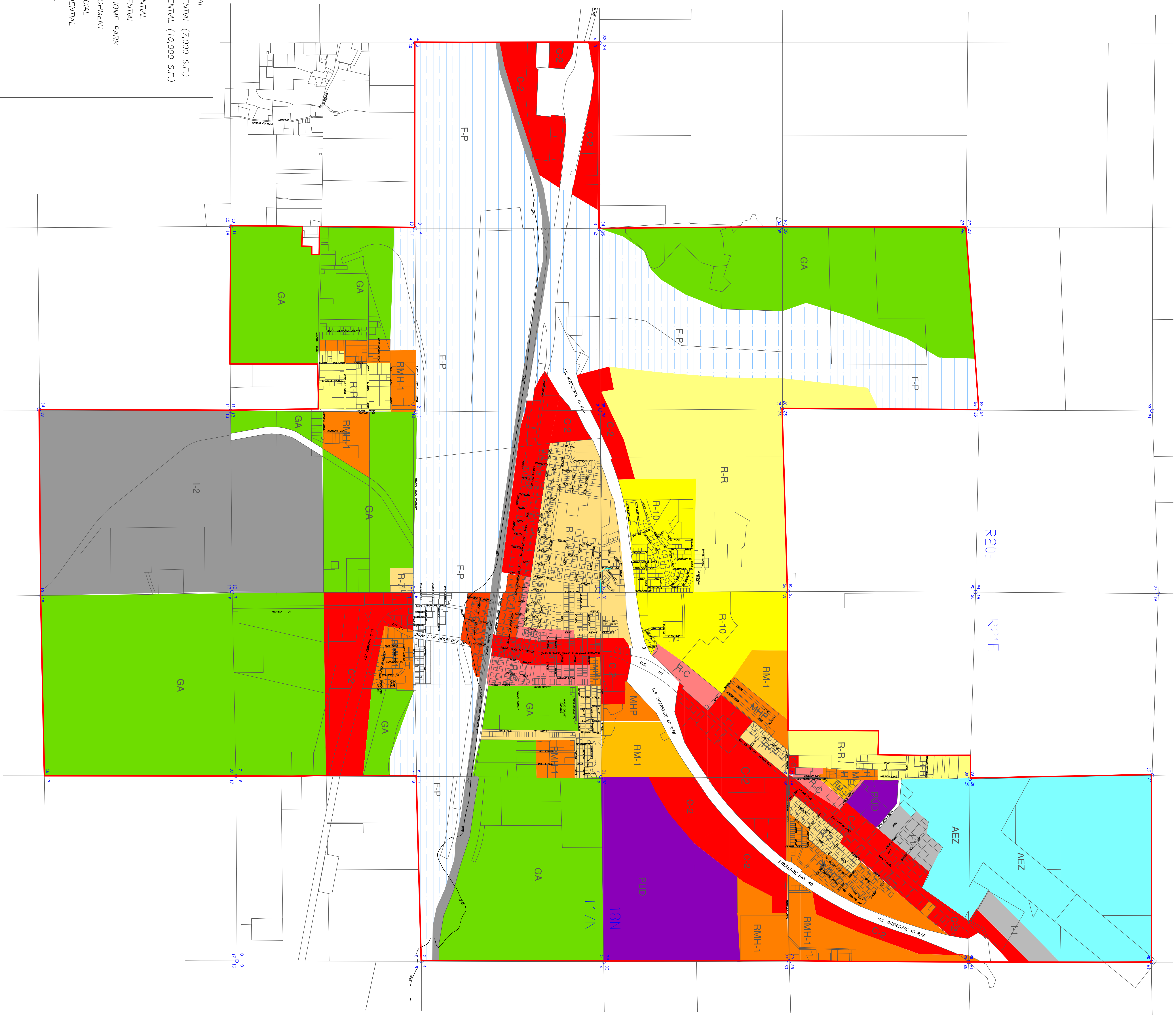


REVISED:
 AUGUST 2003
 NOVEMBER 2005
 MARCH 2008

Color	Code	Description
Green	GA	GENERAL AGRICULTURAL
Light Green	R-7	SINGLE FAMILY RESIDENTIAL (7,000 S.F.)
Yellow-Green	R-10	SINGLE FAMILY RESIDENTIAL (10,000 S.F.)
Yellow	R-R	RESIDENTIAL RANCH
Light Yellow	RM-1	MULTI-FAMILY RESIDENTIAL
Orange	RMH-1	SINGLE FAMILY RESIDENTIAL
Dark Orange	R-MHP	RESIDENTIAL MOBILE HOME PARK
Red-Orange	R-C	PLANNED UNIT DEVELOPMENT
Red	R-C	RESIDENTIAL-COMMERCIAL
Dark Red	C-1	NEIGHBORHOOD COMMERCIAL
Light Red	C-2	GENERAL COMMERCIAL
Grey	I-1	LIGHT INDUSTRIAL
Dark Grey	I-2	HEAVY INDUSTRIAL
Light Blue	AEZ	AIRPORT INDUSTRIAL
Dark Blue	F-P	FLOOD PLAN

LEGEND

NOTE: INFORMATION PRESENTED ON THIS MAP IS APPROXIMATE ONLY.
 INFORMATION PROVIDED BY CITY OF HOLBROOK.



VICINITY MAP

ZONING MAP
 CITY OF HOLBROOK
 NAVAJO COUNTY
 ARIZONA

PREPARED BY:
WOODSON
 ENGINEERING AND SURVEYING, INC.
 224 N. GILBERT STREET
 PHOENIX, ARIZONA 85004
 WWW.WOODSONENGINEERING.COM